

72140856 – TIC 7005-13

Type test of a direct connected
electronic single-phase two-wire energy meter,
made by Wasion Group Limited,
type DDSD101, class 1


Arnhem, 10 July 2013

Author H.J.H. van Deelen
KEMA Nederland B.V.
Calibration & Metering

By order of Wasion Group Limited, China

author : H.J.H. van Deelen 10-7-2013
B 31 pages 3 annexes

reviewed : R.H. Garssen
approved : R.H. Garssen

100. 

© KEMA Nederland B.V., Arnhem, the Netherlands. All rights reserved.

It is prohibited to change any and all versions of this document in any manner whatsoever, including but not limited to dividing it into parts. In case of a conflict between a paper copy and the electronic version (PDF file) provided by KEMA, the latter will prevail because authenticity of PDF files can be verified on www.kema.com/kWh.

KEMA Nederland B.V. and/or its associated companies disclaim liability for any direct, indirect, consequential or incidental damages that may result from the use of the information or data, or from the inability to use the information or data contained in this document.

The contents of this report may only be transmitted to third parties in its entirety and provided with the copyright notice, prohibition to change, electronic versions' validity notice and disclaimer.

Authenticity of PDF files can be verified on www.kema.com/kWh.

Contents

Summary	5
1 Introduction	6
2 Data related to the energy meters tested and marking	6
3 Results of the type test	7
3.1 Tests of the mechanical properties	7
3.1.1 General	7
3.1.2 Case	7
3.1.3 Spring Hammer test	7
3.1.4 Shock test	7
3.1.5 Vibration test	7
3.1.6 Protection against penetration of dust and water	8
3.1.7 Terminals and terminal block	8
3.1.8 Resistance to heat and fire	8
3.1.9 Register and output device	8
3.2 Tests of climatic influences	9
3.2.1 General	9
3.2.2 Dry heat test	9
3.2.3 Cold test	9
3.2.4 Damp heat cyclic test	9
3.2.5 Solar radiation test	9
3.3 Accuracy measurement at different loads	10
3.3.1 Interpretation of test results	10
3.3.2 Test of meter constant	10
3.3.3 Starting current	10
3.3.4 Test of no load condition	10
3.4 Effect of change of influence quantities on accuracy	11
3.4.1 Influence of ambient temperature variation	11
3.4.2 Effect of changes in the auxiliary supply voltage	11
3.4.3 Voltage variation	11
3.4.4 Frequency variation	12
3.4.5 Magnetic induction of external origin 0,5 mT	12
3.4.6 Harmonic components in the current and voltage circuits	12
3.4.7 DC and even harmonics in the a.c. current circuit	12
3.4.8 Odd harmonics in the a.c. current circuit	13
3.4.9 Sub-harmonics in the a.c. current circuit	13
3.4.10 Reversed phase sequence	13
3.4.11 Voltage unbalance	13
3.4.12 Continuous magnetic induction of external origin	13
3.4.13 Operation of accessories	13
3.4.14 Immunity to earth fault	13
3.5 Effect of short-time overcurrents on the accuracy	14
3.6 Self-heating	14
3.6.1 Influence of self-heating on the accuracy	14
3.6.2 Heating	14
3.7 Power consumption of the voltage and current circuits	15
3.8 Fast transient burst test	15
3.8.1 Test method	15
3.8.2 Test levels	15
3.8.3 Test results	15
3.9 Electrostatic discharges	16
3.9.1 Test method	16
3.9.2 Test levels	16
3.9.3 Test results	16
3.10 Immunity to electromagnetic RF fields	16
3.10.1 Test method	16

3.10.2	Test levels.....	16
3.10.3	Test results	16
3.11	Immunity to conducted disturbances induced by RF fields	17
3.11.1	Test method	17
3.11.2	Test levels.....	17
3.11.3	Test results	17
3.12	Radio interference measurement	17
3.12.1	Test levels.....	17
3.12.2	Test results	17
3.13	Voltage dips and short interruptions	18
3.13.1	Test levels.....	18
3.13.2	Test results	18
3.14	Surge immunity test	18
3.14.1	Test method.....	18
3.14.2	Test levels.....	18
3.14.3	Test results	18
3.15	Damped oscillatory waves immunity test.....	18
3.16	Insulation.....	19
3.16.1	Impulse voltage test.....	19
3.16.2	A.C. voltage test	19
Annex A.	Accuracy test results.....	20
Annex B.	Photographs of the meter	24
Annex C.	Cross-reference table and checklist for static meters	30

Summary

The energy meter as described in chapter 2, meets the requirements of:

- IEC 62052-11 (2003) : Electricity metering equipment (a.c.) - General requirements, tests and test conditions - Metering equipment
- IEC 62053-21 (2003) : Electricity metering equipment (a.c.) - Static meters for active energy (classes 1 and 2)

In addition the following requirements were met:

- Ambient temperature test against outdoor requirements (-40 °C to 70 °C). see paragraph 3.4.1.

Requirements for indoor use.

Based on a non-recurrent examination.

1 Introduction

The type test was carried out in the Laboratory of KEMA, from July 2012 till July 2013, on behalf of Wasion Group Limited, on the meter as described in chapter 2.

The energy meters were tested in respect of the following requirements:

- IEC 62052-11 (2003) : Electricity metering equipment (a.c.) - General requirements, tests and test conditions - Metering equipment
- IEC 62053-21 (2003) : Electricity metering equipment (a.c.) - Static meters for active energy (classes 1 and 2)

In addition the following tests were carried out:

- Ambient temperature test against outdoor requirements (-40 °C to 70 °C) see paragraph 3.4.1.

2 Data related to the energy meters tested and marking

Manufacturer	: Wasion Group Limited
Contact person	: Mr. NiuXingLiang
Address	: No.468 West Tongzipo Road High-Tech Industrial Development Zone
Postal code, Place	: 410205, Changsha City, Hunan Province
Country	: China
Production site	: Wasion Group Limited
Address	: No.468 West Tongzipo Road High-Tech Industrial Development Zone
Postal code, Place	: 410205, Changsha City, Hunan Province
Country	: China
Instrument	: Electronic single-phase two-wire energy meter Direct connected
Mark - Type	: DDS101
Register	: LCD
Accuracy Class	: 1
Measurement range	: 220-230 V 10(100) A 50 or 60 Hz 800 imp./kWh
Use	: Indoor
Protection Class	: II
Registry method	: Bidirectional method with always positive register: the meter always counts the energy of the measuring point as received energy, irrespective of the real energy direction

Sample identification: 24052100062, 24052100070, 24052100088, 24052100104, 24052100039, 24052100021, 24052100047, 24052100054, 241304000001, 241304000002, 241304000003, 241304000005, 241304000006 and 241304000007.

The meter contains all required markings.

The basic current and the reference voltage of the meter are standardised values.

All tests are performed at reference voltage and reference frequency, unless mentioned otherwise.

The tests were carried out in conformity with IEC 62052-11 and IEC 62053-21, using a static energy standard. The measurements are carried out with standards that are traceable to international standards. The results in this report relate only to the items tested.

3 Results of the type test

3.1 Tests of the mechanical properties

3.1.1 General

The meter was subjected to the mechanical tests. In order to evaluate the materials used and the construction of the meter, the meters were assessed with regard to the following points.

3.1.2 Case

The meter can be sealed in such a way that the inside of the meter is only accessible after breaking the seal.

3.1.3 Spring Hammer test

After carrying out the spring hammer test according to IEC publication 60068-2-75 with a kinetic energy of 0,2 J, it showed that the mechanical strength of the meter case of the energy meter is adequate.

3.1.4 Shock test

A shock test was performed according to IEC 60068-2-27, with a half-sine pulse, a peak acceleration of 300 m/s² and a pulse duration of 18 ms. Application of the shock has been performed by Sebert Trillingstechniek (S2T). After this test the meter showed no damage.

3.1.5 Vibration test

A vibration test according to IEC 60068-2-6, test procedure A, was carried out on the meters in non-operating condition, frequency range from 10 Hz to 150 Hz, with a constant movement amplitude of 0,075 mm up to 60 Hz and a constant acceleration of 9,8 m/s² above 60 Hz. Per axis 10 sweep cycles were carried out. Application of the vibrations has been performed by Sebert Trillingstechniek (S2T). After the test the meter showed no damage.

3.1.6 Protection against penetration of dust and water

The test was carried out according to IEC 60529, protection degree IP54 (indoor, without suction).

The meter is dustproof as required by IEC 62052-11 (Cat. 2 according to IEC 60529).

The results of the water penetration test were satisfying.

The test was subcontracted to DEKRA certification b.v.

The meter meets the requirements.

3.1.7 Terminals and terminal block

The clearances and creepage distances in the terminal block are adequate.

The terminal block material was tested in accordance with ISO 75 at a temperature of 135 °C and a pressure of 1,8 MPa (method A). The worst case deflection at 135 °C was 0,15 mm (requirement $\leq 0,25$ mm). The material meets the requirements.

The terminal cover can be sealed independently of the meter cover.

3.1.8 Resistance to heat and fire

The material of both the terminal block and the meter case was subjected to a glow-wire test in accordance with IEC 60695-2-11. The temperature of the glow-wire was 960 °C for the terminal block, 650 °C for the meter case and cover. The test was subcontracted to DEKRA certification b.v. The materials meet the requirements.

3.1.9 Register and output device

The meter has an LCD register and records in kWhs.

On the front of the meter an optical (LED) output is available for Wh measurements.

The energy registry method with regards to delivered- and received energy is Bidirectional method with always positive register: the meter always counts the energy of the measuring point as received energy, irrespective of the real energy direction

The meter meets the requirements.

3.2 **Tests of climatic influences**

3.2.1 **General**

In order to evaluate the materials used and the construction of the meter, the relevant meter was assessed with regard to the following points.

3.2.2 **Dry heat test**

The test was performed with meter no. 24052100104.

The test was carried out according to IEC 60068-2-2, at a temperature of 70 °C for a duration of 72 hours.

Afterwards, the meter showed no damage or loss of information.

3.2.3 **Cold test**

The test was performed with meter no. 24052100104.

The test was carried out according to IEC 60068-2-1, at a temperature of -25 °C for a duration of 72 hours.

Afterwards the meter showed no damage or loss of information.

3.2.4 **Damp heat cyclic test**

The test was performed with meter no. 24052100104.

The test was carried out according to IEC 60068-2-30 (variant 1) with an upper temperature of 40°C for 6 cycles.

An insulation test was carried out. The meter showed no damage or loss of information.

The meter meets the requirements.

3.2.5 **Solar radiation test**

This test is not applicable to indoor meters.

3.3 Accuracy measurement at different loads

These tests were carried out with meter no. 241304000002, 241304000003, 241304000005 and 241304000007.

The meters were examined at an ambient temperature of (23 ± 2) °C and after the voltage circuits had been connected to reference voltage for at least 1 hour.

The measuring conditions were as specified in section 8.5 of IEC 62053-21. The measurements were made with an accurate static energy standard.

The percentage error of the meter can be expressed as follows:

$$p = \frac{PM - PA}{PA} \times 100\%$$

in which p = percentage error
PM = energy recorded by meter
PA = actual energy.

The values for the errors registered at different currents and various values for $\cos \varphi$, at reference voltage and reference frequency, can be found in annex A. The results show that the static energy meters, under the reference conditions given in section 8.5 of IEC 62053-21, meet the requirements given in section 8.1 of the relevant publication.

3.3.1 Interpretation of test results

There was no need to displace the zero line to bring the errors of the kWh-meters within the limits.

3.3.2 Test of meter constant

A test has been carried out to prove that the relation between the test output and the registered energy (display) is correct.

3.3.3 Starting current

The minimum load at which the energy meters tested recorded at reference voltage, reference frequency and $\cos \varphi = 1$ was less than 0,1 % of I_b (req. $\leq 0,4$ % I_b).

3.3.4 Test of no load condition

At zero current, reference frequency and a voltage of 115 % U_n , no pulse was generated by the energy meters tested.

The meter meets the requirements.

3.4 Effect of change of influence quantities on accuracy

3.4.1 Influence of ambient temperature variation

The meter was placed into a climatic room with ambient temperatures as shown in the table below until thermal equilibrium was reached. The measured deviations in the errors according to IEC 62053-21 are shown in the following table.

Serial number 241304000005		Wh-measurement						
I in % of I _b	cos φ	Temperature coefficient for the specified temperature range in % per K						
		-40..-25	-25..-10	-10..10	10..30	30..45	45..55	55..70
10	1	0,011%	0,011%	0,008%	0,007%	0,011%	0,009%	0,011%
20	0,5 ind.	0,011%	0,014%	0,008%	0,008%	0,009%	0,009%	0,009%
100	1	0,009%	0,010%	0,009%	0,008%	0,010%	0,010%	0,011%
100	0,5 ind.	0,011%	0,009%	0,009%	0,009%	0,009%	0,009%	0,009%
I _{max}	1	0,007%	0,008%	0,007%	0,007%	0,009%	0,009%	0,010%
I _{max}	0,5 ind.	0,007%	0,006%	0,007%	0,007%	0,009%	0,007%	0,008%

Serial number 241304000007		Wh-measurement						
I in % of I _b	cos φ	Temperature coefficient for the specified temperature range in % per K						
		-40..-25	-25..-10	-10..10	10..30	30..45	45..55	55..70
10	1	0,005%	0,003%	0,005%	0,004%	0,004%	0,007%	0,005%
20	0,5 ind.	0,004%	0,003%	0,004%	0,004%	0,005%	0,005%	0,005%
100	1	0,003%	0,003%	0,003%	0,004%	0,005%	0,005%	0,005%
100	0,5 ind.	0,003%	0,003%	0,003%	0,004%	0,005%	0,004%	0,005%
I _{max}	1	0,001%	0,001%	0,002%	0,002%	0,003%	0,005%	0,005%
I _{max}	0,5 ind.	0,003%	0,001%	0,001%	0,003%	0,004%	0,002%	0,003%

The meter meets the requirements.

3.4.2 Effect of changes in the auxiliary supply voltage

Not applicable.

3.4.3 Voltage variation

This test was carried out with meter no. 241304000002, 241304000003, 241304000005 and 241304000007. The change in the error due to a 10% change of the measuring voltage over the complete voltage range of the meter was measured at various loads.

The maximum change in error was

- 0,17 % registering Wh at cos φ = 1 (Requirement ≤ 0,7%),
- 0,18 % registering Wh at cos φ = 0,5 ind. (Requirement ≤ 1,0%),

The meter meets the requirements.

3.4.4 Frequency variation

This test was carried out with meter no. 241304000002, 241304000003, 241304000005 and 241304000007. The change in the error due to a 2% change of the reference frequency over the complete voltage range of the meter was measured at various loads.

The maximum change in error was

- 0,05 % registering Wh at $\cos\varphi = 1$ (Requirement $\leq 0,5\%$),
- 0,04 % registering Wh at $\cos\varphi = 0,5$ ind. (Requirement $\leq 0,7\%$),

The meter meets the requirements.

3.4.5 Magnetic induction of external origin 0,5 mT

This test was carried out with meter no. 241304000002 and 241304000007.

An external magnetic field was generated using a round coil measuring 1 meter in diameter. The field was applied in all three directions in order to determine the worst-case position. The phase position of the field current (with respect to the measuring voltage) was shifted between 0° and 360° .

The maximum change measured at reference voltage, basic current, reference frequency and $\cos\varphi = 1$ was 1,28%. The maximum permissible change allowed by IEC 62053-21 is 2,0%.

The meter meets the requirements.

3.4.6 Harmonic components in the current and voltage circuits

This test was carried out with meter no. 241304000002, 241304000003, 241304000005 and 241304000007. Using the special amplifiers of the meter test equipment, 10% of fifth harmonic was added to the voltage and 40% of fifth harmonic was added to the current. Using a load at $0,5 I_{\max}$, a 4% increase of power in the fifth harmonic in relation to the nominal frequency was generated. The energy measured was compared to the energy measured by the standard equipment.

The worst case change in the error was 0,21%.

The maximum permissible change allowed by IEC 62053-21 is 0,8%.

The meter meets the requirements.

3.4.7 DC and even harmonics in the a.c. current circuit

This test was carried out with meter no. 241304000001, 241304000003, 241304000005 and 241304000007. Using diodes, a rectified waveform was generated in the meter current circuits according to Annex A1 of IEC 62053-21. The energy measured was compared to the energy measured by the standard equipment. The test was carried out at a current of $I_{\max}/\sqrt{2}$. The worst case change in the error was 0,66%. The maximum permissible change allowed by IEC 62053-21 is 3,0%.

The meter meets the requirements.

3.4.8 **Odd harmonics in the a.c. current circuit**

This test was carried out with meter no. 241304000002, 241304000003, 241304000005 and 241304000007. Using the special amplifiers of the meter test equipment, a phase-fired waveform was generated in the current circuits according to Annex A2 of IEC 62053-21. The energy measured was compared to the energy measured by an energy standard. The worst case difference was 0,02%.

The maximum permissible change allowed by IEC 62053-21 is 3,0%.

The meter meets the requirements.

3.4.9 **Sub-harmonics in the a.c. current circuit**

This test was carried out with meter no. 241304000002, 241304000003, 241304000005 and 241304000007. Using the special amplifiers of the meter test equipment, a "2 on 2 off cycle burst" was generated in the current circuits according to Annex A3 of IEC 62053-21. The energy measured was compared to the energy measured by an energy standard. The worst case difference was 0,01%.

The maximum permissible change allowed by IEC 62053-21 is 3,0%.

The meter meets the requirements

3.4.10 **Reversed phase sequence**

This test is not applicable to single-phase meters.

3.4.11 **Voltage unbalance**

This test is not applicable to single-phase meters.

3.4.12 **Continuous magnetic induction of external origin**

This test was carried out with meter no. 241304000001 and 241304000007.

The magnetic field was generated using an electromagnet as described in annex B of IEC 62053-21. The change in the error due to this magnetic field was less than 0,02% (requirement $\leq 2,0\%$).

The meter meets the requirements

3.4.13 **Operation of accessories**

Operation of accessories did not influence the registration of the meter.

3.4.14 **Immunity to earth fault**

Not applicable.

3.5 Effect of short-time overcurrents on the accuracy

A current of 3000 A ($30 \times I_{max}$) flowed through the current circuit of the energy meter for a period of one half-cycle (10 ms), with the voltage circuits being supplied with nominal voltage. Both before and after the test the error was measured at basic current, reference voltage, rated frequency and $\cos \varphi = 1$. The difference in the error measured before and after this test is listed below:

Serial No.	Difference in error in %	Requirement
241304000007	0,01	$\leq 1,5 \%$

The meter meets the requirements.

3.6 Self-heating

3.6.1 Influence of self-heating on the accuracy

The changes in the error as a result of self-heating with I_{max} , measured at reference voltage, reference frequency, $\cos \varphi = 1$ and also at $\cos \varphi = 0,5$ inductive, are shown in the table below. The changes were measured for at least 60 minutes after connecting the current.

Serial No.	maximum change in %	
	$\cos \varphi = 1$	$\cos \varphi = 0,5 \text{ ind.}$
241304000001	0,15 (req. $\leq 0,7$)	0,07 (req. $\leq 1,0$)
241304000005	0,15 (req. $\leq 0,7$)	0,07 (req. $\leq 1,0$)

The meter meets the requirements.

3.6.2 Heating

This test was carried out with meter no. 241304000001 and 241304000007. The meter was powered with 115% of nominal voltage and maximum current for 2 hours. The maximum temperature rise of the meters was 24 K (req. ≤ 25 K). The meter meets the requirements.

3.7 Power consumption of the voltage and current circuits

The meters were tested for power consumption at a nominal voltage. The maximum values are shown in the table below. The power consumption for the current circuits was measured at nominal current.

Serial number	241304000001		241304000007	
Reference Voltage	220 V		230 V	
Voltage circuit	VA	W	VA	W
	0,85	0,82	1,00	0,85
Current circuit	VA		VA	
	0,11		0,11	

The maximum permissible power consumption for the voltage circuits is 10 VA and 2 W (including the power supply) and for the current circuits 2,5 VA. The meter meets the requirements.

3.8 Fast transient burst test

This test was carried out with meter no. 241304000002.

3.8.1 Test method

The test was carried out with the current circuit carrying basic current.
The test was carried out in accordance with clause 7.5.4 of IEC 62052-11.

3.8.2 Test levels

The test was carried out with a test voltage of 4 kV, in accordance with IEC 62052-11.

3.8.3 Test results

The meter was not influenced by the fast transient burst. The test was subcontracted to DEKRA certification b.v.
The meter meets the requirements.

3.9 **Electrostatic discharges**

This test was carried out with meter no. 241304000002.

3.9.1 **Test method**

The test was carried out in accordance with clause 7.5.2 of IEC 62052-11.

3.9.2 **Test levels**

A discharge voltage of 15 kV (air discharge) respectively 8 kV (contact- / indirect discharge) was applied in accordance with IEC 62052-11.

3.9.3 **Test results**

The tests with electrostatic discharges did not cause any disturbances of the meter functions. The test was subcontracted to DEKRA certification b.v.
The meter meets the requirements.

3.10 **Immunity to electromagnetic RF fields**

This test was carried out with meter no. 241304000002.

3.10.1 **Test method**

The test with an electromagnetic field was carried out in a GTEM cell in the frequency range from 80 MHz to 2 GHz. The test was carried out in accordance with clause 7.5.3 of IEC 62052-11.
The meter was tested at reference voltage.

3.10.2 **Test levels**

At a field strength of 10 V/m the meter was tested at basic current.
At a field strength of 30 V/m the meter was tested without current.

3.10.3 **Test results**

The measured variation in error of the meter due to the electromagnetic field was less than 0,5%.
The maximum allowed variation according to IEC 62053-21 is 2,0%.
Without current in the current circuits the RF field did not produce a change in the register. The test was subcontracted to DEKRA certification b.v.
The meter meets the requirements.

3.11 Immunity to conducted disturbances induced by RF fields

This test was carried out with meter no. 241304000002.

3.11.1 Test method

The test for immunity to conducted disturbances induced by radio frequency fields was carried out using CDNs in the frequency range from 150 kHz to 80 MHz. The test was carried out in accordance with clause 7.5.5 of IEC 62052-11. The meter was tested at reference voltage.

3.11.2 Test levels

At a field strength of 10 V_{emf} the meter was tested at basic current and without current.

3.11.3 Test results

The measured variation in error of the meter due to the electromagnetic field was less than 0,5%. The maximum allowed variation according to IEC 62053-21 is 2,0%. Without current in the current circuits the RF field did not produce a change in the register. The test was subcontracted to DEKRA certification b.v.
The meter meets the requirements.

3.12 Radio interference measurement

This test was carried out with meter no. 241304000002.

3.12.1 Test levels

The test levels were taken from IEC 62052-11 clause 7.5.8. The test was carried out in accordance with CISPR 22.

3.12.2 Test results

The maximum peak value measured in the frequency range from 0,15 MHz to 30 MHz (according to CISPR 22) was far (more than 20 dB) below the maximum allowed peak value in the entire frequency range.
In the frequency range from 30 to 1000 MHz the maximum peak value measured was more than 10 dB below the maximum allowed peak value in the entire frequency range. The test was subcontracted to DEKRA certification b.v.

The meter meets the requirements.

3.13 Voltage dips and short interruptions

This test was carried out with meter no. 241304000003 and 241304000007.

3.13.1 Test levels

The test levels were taken from IEC 62052-11 clause 7.1.2.

3.13.2 Test results

The results of the measurements are mentioned below.

Applied phenomena in the line voltage	Duration of the phenomenon	Requirement	Result
Variation in the line voltage $V_{ref} -50\%$	1 min.	1 min.	Pass
Interruption in the line voltage 3 times with 50 ms restoring time	See annex B of IEC 62052-11		Pass
Interruption in the line voltage	20 ms	20 ms	Pass

The meter meets the requirements.

3.14 Surge immunity test

This test was carried out with meter no. 241304000002.

3.14.1 Test method

The test was carried out in accordance with clause 7.5.6 of IEC 62052-11 using a surge generator with impedances as specified in the standard.

3.14.2 Test levels

The test levels were taken from IEC 62052-11 clause 7.5.6.

3.14.3 Test results

The meter was not influenced by the surges. The surges did not produce a change in the register. The meter did not show any damage after the tests. The meter meets the requirements.

3.15 Damped oscillatory waves immunity test

This test is not applicable to direct connected meters.

3.16 Insulation

This test was carried out with meter no. 24052100047.

3.16.1 Impulse voltage test

The test was carried out in accordance with clause 7.3.2 of IEC 62052-11. The test was subcontracted to DEKRA certification b.v.

Applied pulse	1,2 / 50 μ s pulse ; Ri = 500 Ω	Specification of circuits(s)	Amplitude (open voltage)	Requirement	Result
Between input leads (differential mode)	Between leads voltage circuit	6 kV	6kV	Pass	
Between input circuits and earth (common mode)	Between system and earth	6 kV	6kV	Pass	

The meter meets the requirements

3.16.2 A.C. voltage test

The test was carried out in accordance with clause 7.3.3 of IEC 62052-11.

A voltage of 4 kV (Protective class II) at a frequency of 50 Hz was applied between system and earth.

During the tests no flashovers were observed. After the tests had been carried out no degradation in the measured insulation resistance was found.

The meter meets the requirements.

Annex A. Accuracy test results

Accuracy test results, serial number 241304000002.

220 V 60Hz

Wh

I in % of I _b	Percentage error at cos φ =		
	1	0,5 ind	0,8 cap
5	0,02%		
5 *	-0,08%		
10	0,04%	-0,03%	0,05%
20	0,00%	-0,02%	0,04%
50	0,00%	-0,07%	0,03%
100	0,00%	-0,08%	0,02%
100 *	0,00%	-0,06%	0,04%
¼ I _{max}	-0,03%	-0,14%	-0,01%
⅓ I _{max}	-0,04%	-0,15%	-0,02%
½ I _{max}	-0,06%	-0,18%	-0,04%
¾ I _{max}	-0,09%	-0,23%	-0,09%
I _{max}	-0,14%	-0,31%	-0,16%

* Reverse energy

Accuracy test results, serial number 241304000003.

230 V 60Hz

Wh

I in % of I _b	Percentage error at cos φ =		
	1	0,5 ind	0,8 cap
5	0,21%		
5 *	-0,18%		
10	0,15%	0,23%	0,18%
20	0,08%	0,10%	0,10%
50	0,05%	0,04%	0,06%
100	0,03%	0,00%	0,04%
100 *	0,03%	0,00%	0,05%
¼ I _{max}	-0,03%	-0,11%	-0,03%
⅓ I _{max}	-0,05%	-0,15%	-0,06%
½ I _{max}	-0,08%	-0,20%	-0,11%
¾ I _{max}	-0,15%	-0,32%	-0,22%
I _{max}	-0,27%	-0,48%	-0,38%

* Reverse energy

Accuracy test results, serial number 241304000005.

I in % of I _b	Percentage error at cos φ =			Wh
	1	0,5 ind	0,8 cap	
5	-0,02%			
5 *	0,02%			
10	0,01%	-0,01%	0,00%	
20	0,00%	0,01%	0,00%	
50	0,00%	0,00%	-0,01%	
100	0,00%	-0,01%	-0,01%	
100 *	0,01%	0,04%	0,01%	
¼ I _{max}	-0,02%	-0,05%	-0,03%	
1/3 I _{max}	-0,03%	-0,06%	-0,05%	
½ I _{max}	-0,05%	-0,10%	-0,07%	
¾ I _{max}	-0,09%	-0,16%	-0,13%	
I _{max}	-0,14%	-0,26%	-0,22%	

* Reverse energy

Accuracy test results, serial number 241304000003.

230 V 50Hz

Wh

I in % of I _b	Percentage error at cos φ =		
	1	0,5 ind	0,8 cap
5	0,10%		
5 *	-0,07%		
10	0,08%	0,17%	0,09%
20	0,05%	0,10%	0,06%
50	0,03%	0,06%	0,02%
100	0,01%	0,03%	0,01%
100 *	0,04%	0,06%	0,03%
¼ I _{max}	0,00%	-0,03%	-0,01%
⅓ I _{max}	-0,01%	-0,05%	-0,03%
½ I _{max}	-0,04%	-0,10%	-0,08%
¾ I _{max}	-0,10%	-0,19%	-0,15%
I _{max}	-0,17%	-0,30%	-0,27%

* Reverse energy

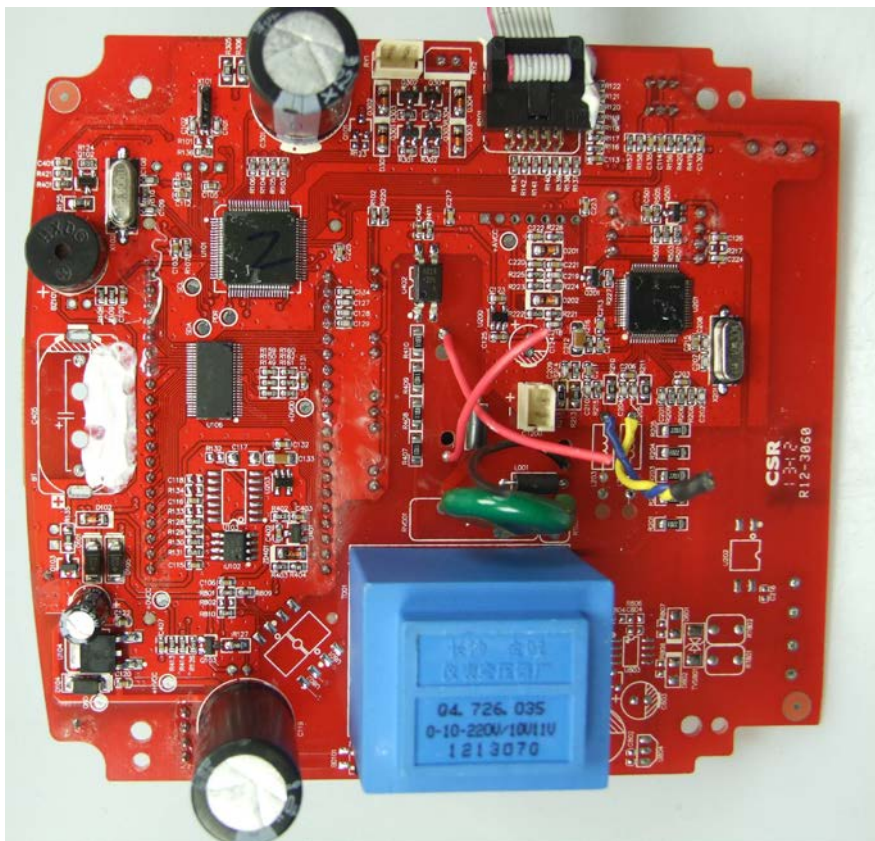
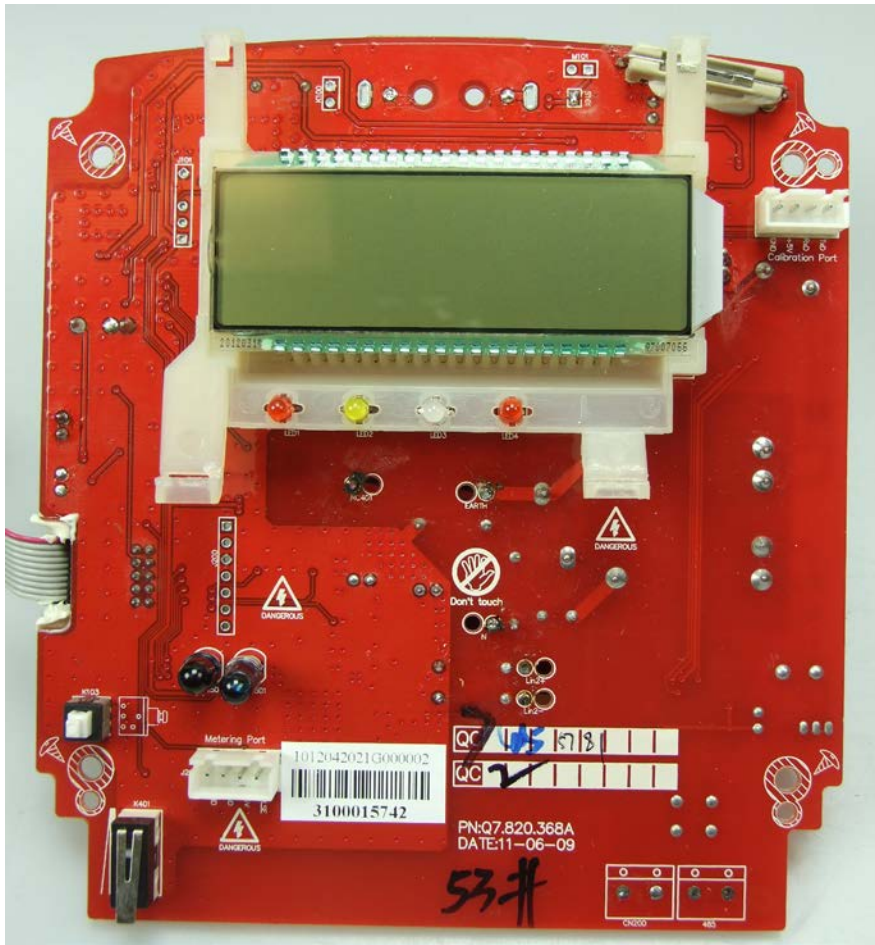
Annex B. Photographs of the meter













Annex C. Cross-reference table and checklist for static meters

Chapter	Test	IEC 62052 part 11	IEC 62053 part 21	Applied standards	
3.3	Accuracy measurement at different loads		8.1		Pass
3.3.4	Test of no load condition		8.3		Pass
3.3.3	Starting current		8.3		Pass
3.3.2	Meter constant		8.4		Pass
3.3.1	Interpretation of test results		8.6		Pass
3.4.3	Voltage variation		8.2		Pass
3.4.2	Auxiliary voltage variation		8.2		N.A.
3.4.4	Frequency variation		8.2		Pass
3.4.10	Reversed phase sequence		8.2		N.A.
3.4.11	Voltage unbalance		8.2		N.A.
3.4.6	Harmonic components		8.2		Pass
3.4.7	D.C. and even harmonics		8.2		Pass
3.4.8	Odd harmonics in the a.c. current circuit		8.2		Pass
3.4.9	Sub-harmonics in the a.c. current circuit		8.2		Pass
3.4.12	Continuous magnetic induction of external origin		8.2		Pass
3.4.5	Magnetic induction of external origin 0,5 mT		8.2	EN-IEC 61000-4-8	Pass
3.4.1	Influence of ambient temperature variation		8.2		Pass
3.4.13	Operation of accessories		8.2		Pass
3.4.14	Immunity to earth fault	7.4			N.A.
3.9	Electrostatic discharges	7.5.2		EN-IEC 61000-4-2	Pass
3.10	Immunity to electromagnetic RF fields	7.5.3		EN-IEC 61000-4-3	Pass
3.11	Immunity to RF conducted disturbances	7.5.5		EN-IEC 61000-4-6	Pass
3.8	Fast transient burst test	7.5.4		EN-IEC 61000-4-4	Pass
3.14	Surge immunity test	7.5.6		EN-IEC 61000-4-5	Pass
3.13	Voltage dips and short interruptions	7.1.2		EN-IEC 61000-4-11	Pass
3.15	Damped oscillatory waves immunity test	7.5.7		EN-IEC 61000-4-12	N.A.
3.12	Radio interference suppression	7.5.8		CISPR 22, EN 55022	Pass
3.1	General- and mechanical requirements	5			Pass
3.1.3	Spring hammer test	5.2.2.1		EN-IEC 60068-2-75	Pass
3.1.8	Resistance to heat and fire	5.8		EN-IEC 60695-2-11	Pass

3.1.6	Protection against penetration of dust and water	5.9	EN-IEC 60529	Pass
3.1.4	Shock test	5.2.2.2	EN-IEC 60068-2-27	Pass
3.1.5	Vibration test	5.2.2.3	EN-IEC 60068-2-6	Pass
3.1.7	Terminal block material test	5.4	ISO 75-2	Pass
2	Marking of the meter	5.12	IEC 60387, IEC 60417-2, EN 62053-52	Pass
3.2.2	Dry heat test	6.3.1	EN-IEC 60068-2-2	Pass
3.2.3	Cold test	6.3.2	EN-IEC 60068-2-1	Pass
3.2.4	Damp heat cyclic test	6.3.3	EN-IEC 60068-2-30	Pass
3.2.5	Solar radiation test	6.3.4	EN-IEC 60068-2-5	N.A.
3.16.1	Impulse voltage test	7.3.2	IEC 60060-1	Pass
3.16.2	A.C. voltage test	7.3.3		Pass
3.6.1	Influence of self heating		7.3	Pass
3.6.2	Heating	7.2		Pass
3.7	Power consumption		7.1	Pass
3.5	Influence of short-time overcurrents		7.2	Pass